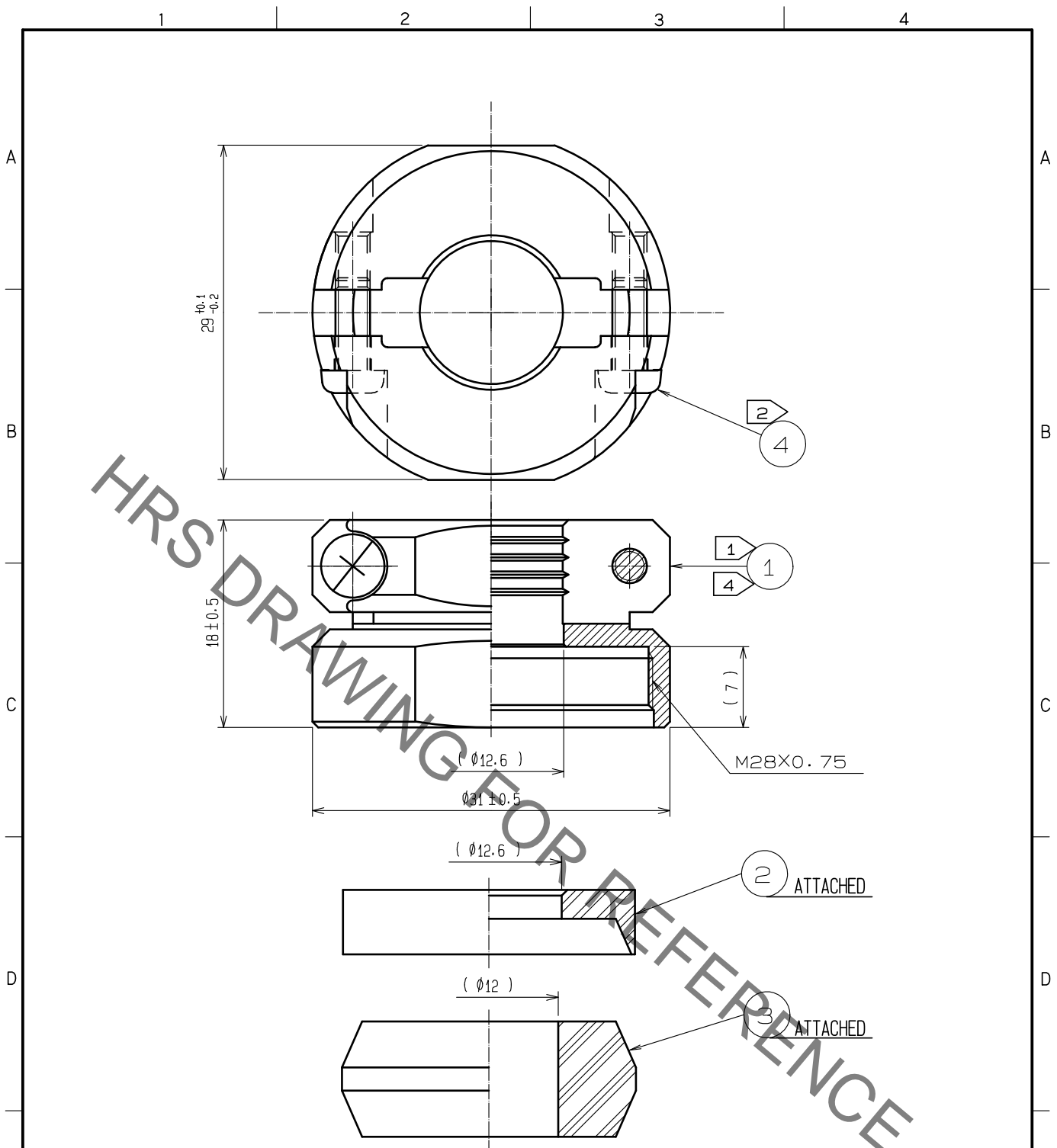


Aug. 1. 2022 Copyright 2022 HIROSE ELECTRIC CO., LTD. All Rights Reserved.  
In case of consideration for using Automotive equipment / device which demand high reliability, kindly contact our sales window correspondents.



NOTE

- ① THE RECOMMENDED CLAMP TORQUE OF REF. NO. ① TO BE 5 TO 5.5 N · m.  
LOCTITE 263, HENKEL JAPAN OR EQUIVALENT IS RECOMMENDED TO PREVENT REF. NO. ① FROM LOOSENING.
- ② THE RECOMMENDED CLAMP TORQUE OF REF. NO. ④ TO BE 0.65 TO 0.7 N · m.
- ③ THE CABLE PULL AND TWISTING STRENGTH AND OTHER CHARACTERISTICS MAY DIFFER, DEPENDING ON THE CABLE STRUCTURE. PLEASE CONFIRM BEFORE THE USE.
- ④ PORE SHOWN ON THE SURFACE OF REF. NO. ① COMPONENT, GENERATED BY THE PROCESS OF MACHINING AFTER DIE-CASTING, WILL NOT AFFECT PERFORMANCE.

2	POLYPHENYLENE SULFIDE (BLACK)	UL94V-0	4	STAINLESS STEEL	M3×0.5×8
1	ZINC ALLOY	BLACK CHROME PLATING	3	ACRYLONITRILE BUTADIENE RUBBER (GRAY)	
NO.	MATERIAL	FINISH . REMARKS	NO.	MATERIAL	FINISH . REMARKS

UNITS mm		SCALE 2 : 1	COUNT 	DESCRIPTION OF REVISIONS	DESIGNED	CHECKED	DATE
HIROSE ELECTRIC CO., LTD.		APPROVED : HY. KOBAYASHI	18. 02. 26	DRAWING NO.	EDC-110615-31-00		
		CHECKED : HY. KOBAYASHI	18. 02. 26	PART NO.	JR25WCC-12(31)		
		DESIGNED : TH. KAMEYA	18. 02. 23	CODE NO.	CL114-2065-8-31		
		DRAWN : MK. INOUE	18. 02. 14		1/1		