

# 15 Watt BTI Series

**Wide input voltage range, High efficiency, Low input / Load regulation**

Input: 24V, 48V Output: 3.3V, 5V, 12V, 15V,  $\pm 12V$ ,  $\pm 15V$

- Industry standard 1 x 1(in)
- Wide input voltage range 4:1
- High efficiency 85% to 90%
- 6 sided metal shield cover
- Remote ON/OFF control
- Isolation voltage DC1500V
- Over current protection
- Low input voltage protection
- Dual power supply usable as single power supply
- Operating temp. -40°C to +85°C (Temp. derating required)
- RoHS compliance
- UL/c-UL approved

Model BTI Series	Input V Vdc	Output V Vdc	Output P W	Output I A	Line Reg. %(max.)	Load Reg. %(max.)	Ripple Noise mVpp(max.)	Efficiency %(typ.)
<b>BTI24-03S400D</b>	9 to 36	3.3	13.2	0 to 4	0.4	0.4	70	85
<b>BTI24-05S300D</b>		5	15	0 to 3				87
<b>BTI24-12S130D</b>		12	15.6	0 to 1.3				88
<b>BTI24-15S100D</b>		15	15	0 to 1	0.5	1.0	95	88
<b>BTI24-12W65D</b>		$\pm 12$	15.6	0 to 0.65				89
<b>BTI24-15W50D</b>		$\pm 15$	15	0 to 0.5				90
<b>BTI48-03S400D</b>	18 to 76	3.3	13.2	0 to 4	0.4	0.4	70	85
<b>BTI48-05S300D</b>		5	15	0 to 3				87
<b>BTI48-12S130D</b>		12	15.6	0 to 1.3				88
<b>BTI48-15S100D</b>		15	15	0 to 1	0.5	1.0	95	88
<b>BTI48-12W65D</b>		$\pm 12$	15.6	0 to 0.65				89
<b>BTI48-15W50D</b>		$\pm 15$	15	0 to 0.5				90

Note 1: If not indicated, Input V rating, Output V rating, Output I rating, ambient temp. are measured at 25°C $\pm$ 5°C

Note 2: Ripple noise is measured at BW=20MHz.

Note 3: Temp. derating and forced air cooling required depending on the ambient temp. conditions.

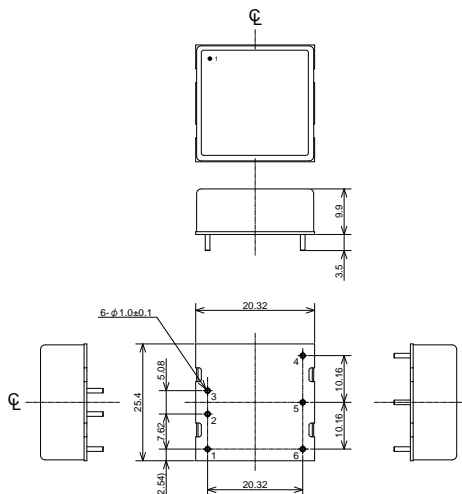
Note 4: Adjustable output voltage range is 2.97 to 3.63V(3.3V products), 4.5 to 5.5V(5V products), 10.8 to 13.2V(12V products) and 13.5 to 16.5V(15V products).

Note 5 : The maximum output power of each product is specified as shown in Table above. If the output voltage is raised with the variable output voltage function, reduce the output current to the value specified by the maximum output power.

**NOTE!!**

This catalog is an outline of the product. When designing, be sure to refer to the data sheet.

**<Outline>**



**BTI-S Series**

Pin	Function
1	RC
2	-Vin
3	+Vin
4	-Vout
5	TRIM
6	+Vout

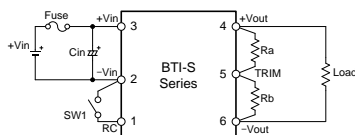
**BTI-W Series**

Pin	Function
1	RC
2	-Vin
3	+Vin
4	-Vout
5	COM
6	+Vout

Weight : 20g typ.  
Unit : mm

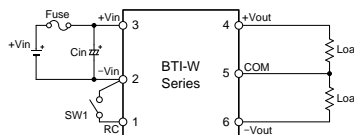
**<Standard connection diagram>**

**BTI-S Series (3.3V, 5V, 12V, 15V)**



SW1  
Open = Output OFF  
Short = Output ON

**BTI-W Series ( $\pm 12V$ ,  $\pm 15V$ )**



SW1  
Open = Output OFF  
Short = Output ON

- This product has limit to the capacity of external capacitor. Please refer to the data sheet.

- BTI-S Series is rated output voltage with 5pin (TRIM) open. To change the output voltage, connect a resistor to Ra or Rb.