



150m, Ultra-far Night Vision All-seeing Eye Night Vision Track

InfiRay® T2 Thermal Camera for Smartphone



Smartphone holder is not included



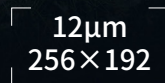
Long-distance human recognition



Hot spot tracking



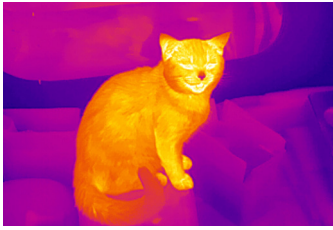
Adjustable reticle



High definition thermal imaging core



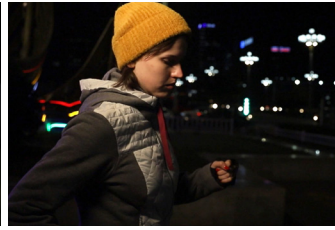
Exclusive patented image algorithm



Animal observation



Outdoor sports



Night run



Short video making

Specifications

Model	T2 Search
Resolution	256 × 192
Pixel pitch	12μm
Spectral Band	8~14μm
Focal length	9.0mm
FOV	19.6° × 14.7°
Focusing mode	Manual
Frame rate	25Hz
NETD	≤50mk
MRTD	≤500mK
Operating temperature	-10°C~+ 50°C
Power consumption	< 350mW
Weight (with lens)	<20g
Dimension (with lens)	26mm × 26mm × 26.6mm
Supported system	Android 6.0 and above*
Image enhancement	Digital detail enhancement (DDE)
Reticle	Support, with hot/cold spot tracking
Color palette	White hot, black hot, red hot, and other pseudo colors
Secondary development	Provide SDK for secondary development
Magnification	Support 1×~4× continuous digital zoom
Video saving	Support photo and video saving
APP updating	Support APP online updating

*Support mainstream smartphone systems, but some systems have not been tested yet.



InfiRay Technologies Co., Ltd.

Tel: 400-998-3088

Web: www.infirayoutdoor.com